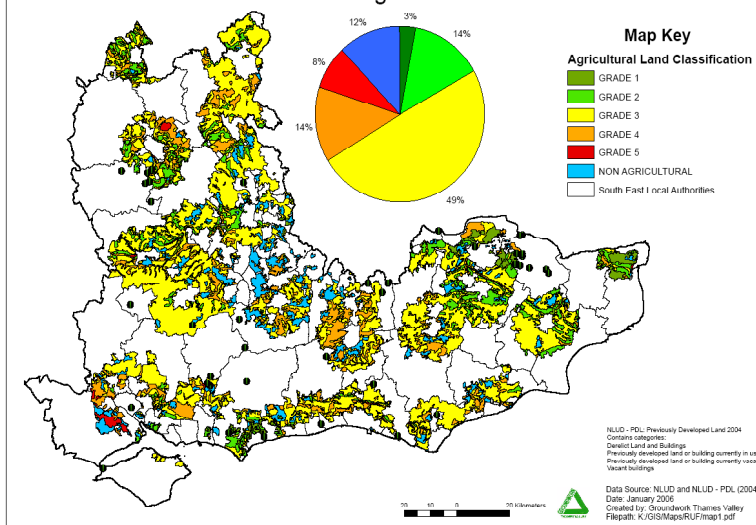


# GROUNDWORK THAMES VALLEY

## Case Study 1: LAND

Land use issues are at the heart of Groundwork's aim to change lives by changing places. Through the targeted use of GIS technology we have been able to deliver high quality, informative project work that addresses the land use issues close to people's lives. This helps to connect people with their surroundings to create sustainable parks, town and streets. These projects include: conventional mapping to help categorise different land use classifications such as defining the urban/rural fringe, visualisation projects that help to represent change plus using GIS to ensure that the local community are involved and fully consulted in the planning process. These different strands of work join together to form an integrated approach to land management and it's impact on local people.

MAP 1: CIAT Southeast - Agricultural Land Classification



### Project Overview

### Regional Land Use mapping

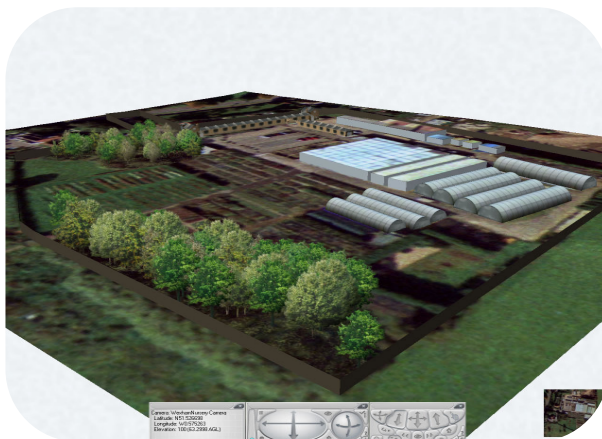
In the South East Region, GIS has been used to categorise land use and target resources into areas of need as part of the work of a broad based regional partnership. This project work has helped the partnership work more effectively in regional planning decisions and protecting countryside from unsuitable development.

### The Benefits of Three Dimensional GIS and Visualisations

It is often difficult to imagine how an area will look after change such as restoration, tree planting or landscaping. We can help local people to visualise change by:

- Creating 3D walk-throughs
- Producing interactive walk through
- Using visualisation in **community planning**
- Designing **3D models** of proposed regeneration projects.

In the example shown here, aerial photography and Mastermap data have been combined within a 3D modelling package to produce a **realistic representation** of a proposed development site.



## about **groundwork**

Groundwork Thames Valley is an independent social, environmental and economic regeneration charity. We work with partners from the local community, businesses and local and national government. We work to change places and lives for the better - using projects to engage and motivate local people to improve their quality of life by using and improving their local environment. For more information please contact: **Andrea McCubbin at Groundwork Thames Valley, Colne Valley Park Centre, Denham Court Drive, Denham, Uxbridge, Middlesex, UB9 5PG. Tel 01895 839840 Fax 01895 833552 Email [andrea.mccubbin@groundwork.org.uk](mailto:andrea.mccubbin@groundwork.org.uk)**